

FIXED MANUAL HOSE REELS IN PAINTED STEEL FOR AIR-WATER HOSES FROM 20 TO 28 bar

Equipped with:

- Galvanized steel connections
- Brass 90° swivelling joint
- Viton® seals
- Revolving flick folding handgrip



FM-400

Article	Equipped	Hose reel capacity	Inlet-Outlet
077-1201-300	without hose	Ø 3/8" - max 15 m	F1/2"G - M3/8"G
077-1201-400	without hose	Ø 1/2" - max 10 m	F1/2"G - M1/2"G



FM-460

Article	Equipped	Hose reel capacity	Inlet-Outlet
077-1301-300	without hose	Ø 3/8" - max 18 m	F1/2"G - M3/8"G
077-1301-400	without hose	Ø 1/2" - max 15 m	F1/2"G - M1/2"G



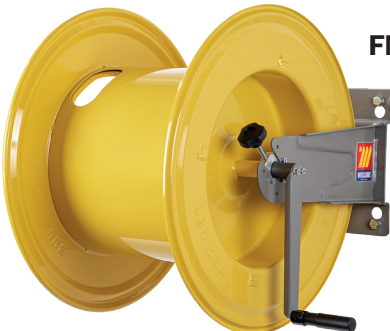
FM-550

Article	Equipped	Hose reel capacity	Inlet-Outlet
077-1401-400	without hose	Ø 1/2" - max 25 m	F1/2"G - M1/2"G
077-1402-500	without hose	Ø 3/4" - max 15 m	F1"G - M3/4"G



FM-555


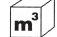

Article	Equipped	Hose reel capacity	Inlet-Outlet
077-1502-400	without hose	Ø 1/2" - max 30 m	F1/2"G - M1/2"G
077-1502-500	without hose	Ø 3/4" - max 20 m	F1"G - M3/4"G
077-1502-600	without hose	Ø 1" - max 15 m	F1"G - M1"G



FM-560

Article	Equipped	Hose reel capacity	Inlet-Outlet
077-1602-400	without hose	Ø 1/2" - max 50 m	F1/2"G - M1/2"G
077-1602-500	without hose	Ø 3/4" - max 40 m	F1"G - M3/4"G
077-1602-600	without hose	Ø 1" - max 30 m	F1"G - M1"G

OVERALL DIMENSIONS

Mod.	A	B	C	D	E	F	G			
FM-400	158	120	168	192	95	400	435	9,85<9,85	0,084	1
FM-460	158	120	168	192	95	460	500	11,31<11,34	0,094	1
FM-550	200	150	225	270	120	550	600	16,21<16,83	0,130	1
FM-555	250	200	225	270	170	550	600	17,77<17,83	0,150	1
FM-560	440	390	225	270	360	550	600	25,75<26,38	0,240	1

